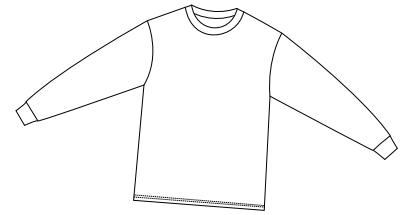
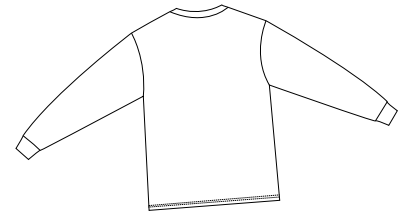


100% Cotton Essential Long Sleeve T-Shirt

PORT & COMPANY®



Front



Back

PC61LS

- * 6.1-ounce 100% cotton
- * Taped shoulder to shoulder
- * Coverseamed neck
- * Double-needle and Bottom hem

Care Instructions:

Machine wash cold, inside out, with like colors. Only non-chlorine bleach when needed. Tumble dry medium. Medium-hot iron. Do not iron decoration.

Finished Measurements in Inches

| Size | S | M | L | XL | 2XL | 3XL | 4XL |
|--------|-------|------|------|-------|------|-------|------|
| Neck | 6.75 | 6.75 | 7.25 | 7.25 | 7.75 | 7.75 | 7.75 |
| Width | 18 | 20 | 22 | 24 | 26 | 28 | 30 |
| Length | 27 | 29 | 30 | 31 | 33 | 34.5 | 36 |
| Sleeve | 31.25 | 33.5 | 35.5 | 37.75 | 40 | 42.25 | 44.5 |

Neck measured by width, seam to seam. Chest width measured 1" below arm hole. Pocket measured HxW. Body length measured from back neck seam to hem. Sleeve length measured from center back to hem.

Colors

White

Lights

Ash**

Darks

Athletic Heather

Athletic Maroon

Black

Dark Green

Kelly

Navy

Purple

Red

Royal

Stonewashed Blue

Stonewashed Green

Color Chart

| Colors | Ash | Athletic Heather | Athletic Maroon | Black | Dark Green | Kelly | Navy | Purple |
|--------|----------|------------------|------------------|-------------------|------------|-------|------|--------|
| PMS | No Match | No Match | 229C | Process Black | 5535C | 340C | 296C | 273C |
| Colors | Red | Royal | Stonewashed Blue | Stonewashed Green | White | | | |
| PMS | 200C | 661C | 5414C | 414C | No Match | | | |

Please Note:

Colors shown are approximate and for reference only. For closest match see PMS colors, or for exact match, returnable samples and grommeted samples are available.